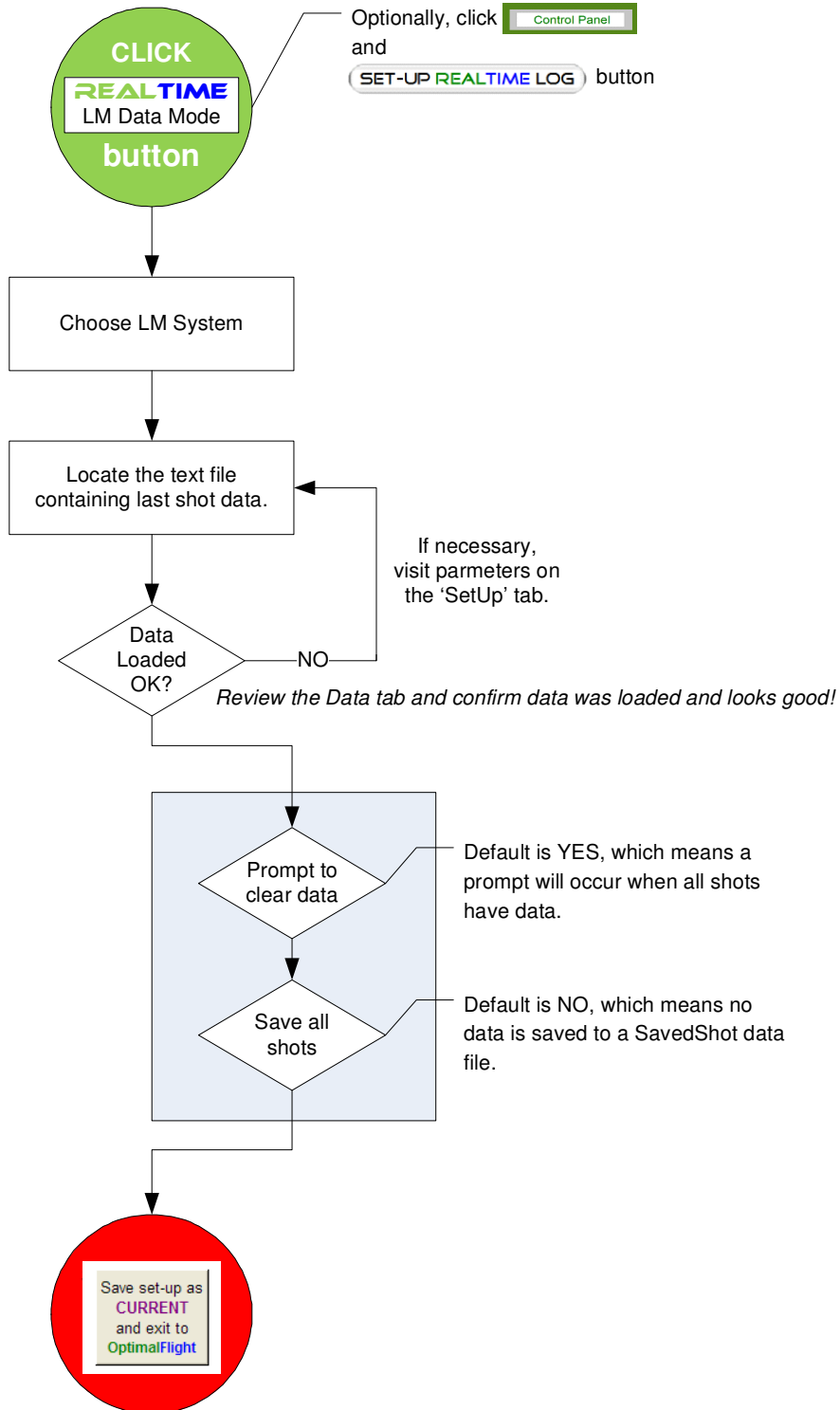


**Document Summary:**

This document contains a flowchart of steps to interface OptimalFlight with a launch monitor system.



Advanced Steps:

---

Windows XP, Vista, and Windows 7 operating systems have different configurations to meet Microsoft standards. This document will be updated to reflect the latest changes in RealTime support.

Zelocity PureLaunch .....	2
FlightScope .....	3
TrackMan.....	3
GolfAchiever II.....	3
GolfTek.....	3
3Trak.....	4
AccuSport Vector - Original.....	4
AccuSport - VectorPro .....	4
Other systems.....	4

**Zelocity PureLaunch**

File to look for: **PureLaunch.log**

By default, the Zelocity configuration is ready to go for a Windows XP system.

In Vista, the search for this file has a few more steps because Vista performs file search operations only on files that are accessible to the user. The PureLaunch.log file will not be 'located' until a few changes are made.

Access the **Start menu and perform the following steps:**

- Go to the upper right hand section of the menu and click on **Search**
- When you first get the search menu, the location for the search will be defaulted to Indexed Files. Set the location to **Everywhere**
- You will also need to check the box below the location to **include non-indexed, hidden, and system files**
- Type **Purelaunch (or Purelaunch.log for an exact match)** into the search box and click on the search button
- This search will retrieve several files. What you are looking for is a text file entitled Purelaunch
- Review this file and confirm the contents contain launch data. If yes, the directory path and file name is required for use with OptimalFlight's RealTime application.

Begin the search in the **C:\Users** folder for fastest results.

The expected result is similar to:

**C:\Users\\_\_\_\_\_ \AppData\Local\VirtualStore\Program Files\PureLaunch\PureLaunch.log**

\* The blank underlined text is unique to the user's PureLaunch installation.

\*\* Once configuration is saved in the RealTimeSetUp application, no additional configuration is required for future fitting sessions.

**FlightScope**

File to look for: *It varies from session to session because it has a date and time stamp.*  
Two configuration files are available. The latest release V5.5 has more data columns than earlier releases.

Files will be put in a path similar to the following:

**C:\ProgramData\EDH\FlightScope\HistoryStore1.0\TextExport\\_\_\_\_\_ \ClubComp\\_\_\_\_\_.txt**

\* The blank underlined text is unique to the user's FlightScope installation and session file.

**\*\* Each new FlightScope session will record data to a new file. The RealTime SetUp process will need to be repeated every time a new session occurs. A future FlightScope software enhancement will make it more automated.**

**TrackMan**

File to look for: **stroke.csv**

Files will be put in a path similar to the following:

**C:\Documents and Settings\\_\_\_\_\_ \Local Settings\Application Data\TrackMan\TrackMan Golf 4.0\4.0.1.281**

Note: A file search starting in **C:\Documents and Settings** will help locate the stroke.csv file quickly because the actual software version (ex: subfolders of: **TrackMan Golf 4.0\4.0.1.281** ) may change.

There are 3 TrackMan configurations depending on how you want the raw data to be processed (English, Meters, or MPH and Meters).

**\*\* Once configuration is saved in the RealTimeSetUp application, no additional configuration is required for future fitting sessions.**

**GolfAchiever II**

File to look for: **\_\_\_\_\_gsd**

**GolfTek**

File to look for: **Swinglog.txt**

Vista log location C:\Users\Public\Public Documents\Golftek\ProGrafix

XP\Win2000 location C:\Documents and Settings\All Users\Shared Documents\Golftek\ProGrafix

Win98\WinME location C:\Program Files\Golftek\ProGrafix

**\*\* Once configuration is saved in the RealTimeSetUp application, no additional configuration is required for future fitting sessions.**

**As of February 22, 2009 - OptimalFlight automatically locates this file with ProGrafix 3 version 3.8.1 and later.**

**3Trak**

File to look for: ShotHistory.txt

Be sure to hit a shot, then turn on RealTime mode. This file appears **only** after the first ball is hit

Files will be put in the following folder

**C:\Program Files\Friendly Software\World Tours Golf\RoundStats\**

**AccuSport Vector - Original**

File to look for: **A saved export text file**

This file can be put anywhere. OptimalFlight will read the last line of this file and transfer it.

Vector does not actively save to a file until you tell it to. This means if you have a good shot, the export file needs to be saved.

**AccuSport - VectorPro**

**VectorPro** is not supported at this moment.

If you have a way to export data file to a text or worksheet, a similar solution to the above can be developed.

Contact [support@qualitygolfstats.com](mailto:support@qualitygolfstats.com) if you want to be part of this product development and testing.

**Other systems**

**New systems can be supported in OptimalFlight within 1-3 business days.**

**If you would like your system to benefit from RealTime integration, contact [support@qualitygolfstats.com](mailto:support@qualitygolfstats.com)**